
PT.MIRAE FLATWARE INDONESIA

Company Profile



Quality in price!!!

1. Factory View



2. Reasons to set up the factory in Indonesia

*** Indonesia**

1. Skilled workers who ever produced high end quality.
→ We can catch up the quality in short time
2. Easier communication for better control
3. Enough labor force which we can bind workers under contract
→ Strong management (No strikes)
→ Small sized factory is stronger in Indonesia
→ Stabilized labor market
→ Wage rate is lower than China & Vietnam
→ Rare movement of workers to other factory
4. Better import tax rate from customer's side
5. Changed mind of the employees

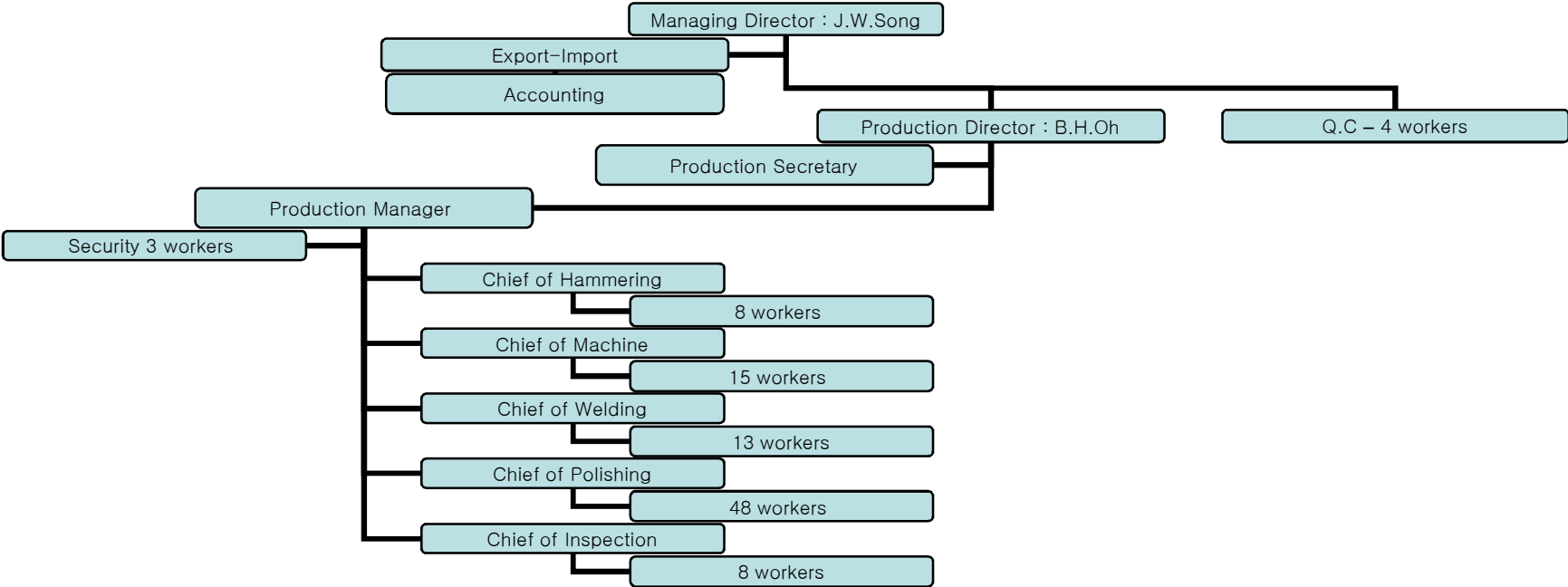
*** China**

1. Expecting wage increase after Olympic
2. Need to consider the value of Chinese currency
3. Unskilled workers who do not have the experience to produce hollow handle product

*** Vietnam**

1. Getting difficult to hire workers due to so many foreign factories who provide cleaner environment & more wage
→ Hard to expect satisfied quality caused by movement of skilled workers to another factory
2. Expecting wage increase
3. Difficult control on the employees due to the problem of communication

3. Organization



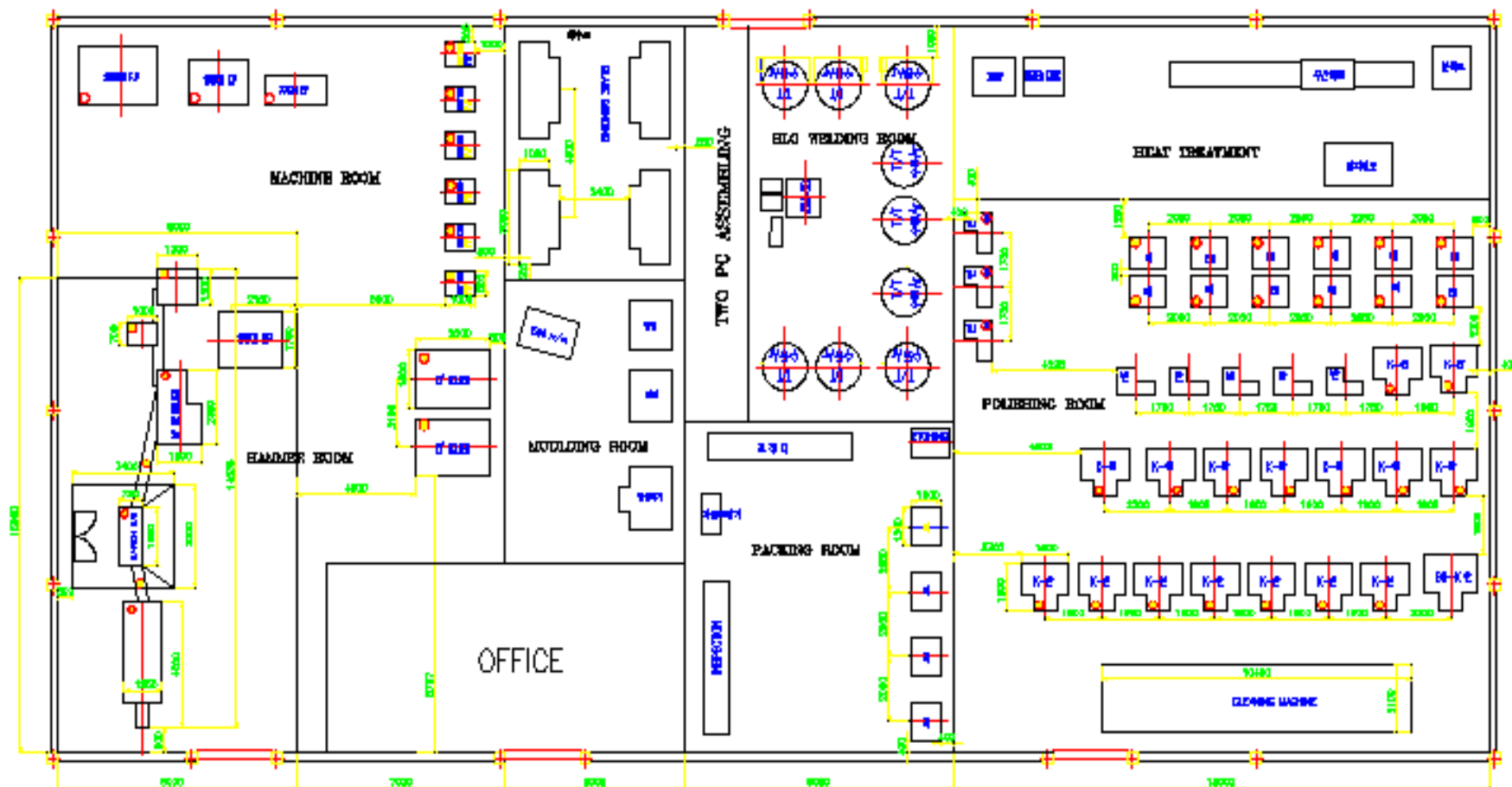
4. Factory Layout

1) Machinery List

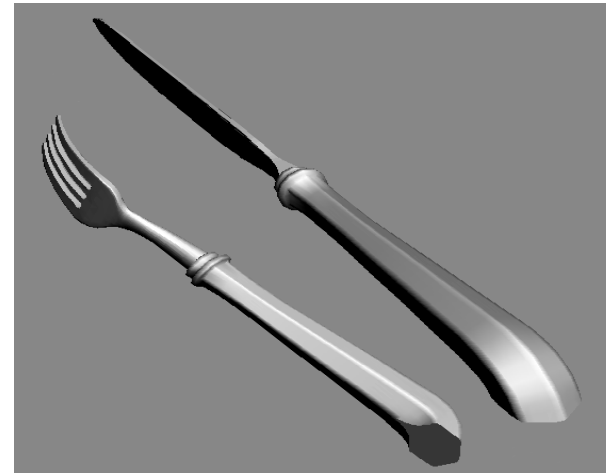
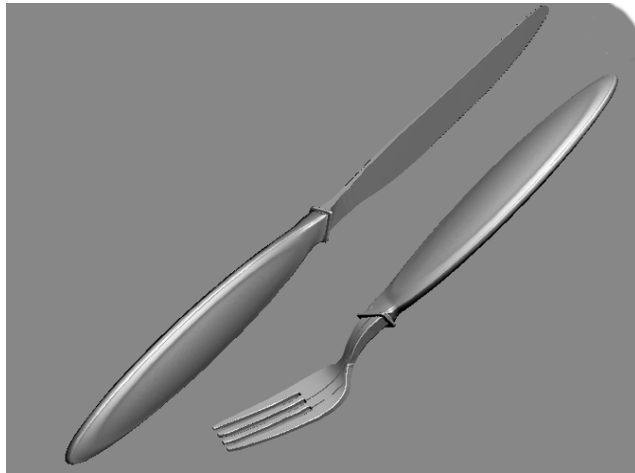
Machine	Specification	Number
Drop Hammer	¾ tons	1
Rolling M/C (Knife)	10 Inch	1
Crank Power Press	20 tons	5
Crank Power Press	35 tons	1
Crank Power Press	150 tons	1
Friction Press	70 tons	1
Friction Press	100 tons	1
Friction Press	200 tons	1
Knuckle Press	400 tons	1
Shaper		1
Manual Polishing M/C		13
Automatic K-Polishing M/C		13
Automatic SSK-Polishing M/C		1
Automatic S-Polishing M/C		1
Hand Grinding M/C		26
Cleaning M/C		1
Blade Grinding M/C		2
Rolling M/C	12 Inch	2
Knife Heating Furnace		1
Mould Furnace		2
Sandblast M/C		2
Handle & Blade Cutting M/C		2
Material Cutting M/C		1
Flat Grinding M/C		1
Extra		30
Total		112

2) Lay out

PT.MIRAE FLATWARE INDONESIA MACHINE LAY-OUT



5. 3 Dimensional Designs



- Our patent to get ahead of the market is new design introduction.
- We will use graphic design program such as 3D Max or Rhino.
- Approaching to the customers first with our graphic design before launching to sampling.
- We can save the time & money by showing 3D shape of new pattern.
- Easier to get the customers understood about overall shape of the design.

6. Price Policy

* Our price level is totally depend on below factors.

1. How difficult design it is?
2. Order q'ty
3. Will the order be repeated?
4. Buyer's extra care request
5. Payment terms

* Mentioned price on the right is based on main Dinner sized items

* In case of promotion order, the price will be adjusted depend on q'ty.

* Tooling cost depend on order q'ty

- 500 Dozen : no cost
- 400 Dozen : US\$ 200
- 300 Dozen : US\$ 300
- 200 Dozen : US\$ 400
- 100 Dozen : US\$ 500

--> When total order is more than 500 Dozen, paid tooling cost will be refunded to customers.

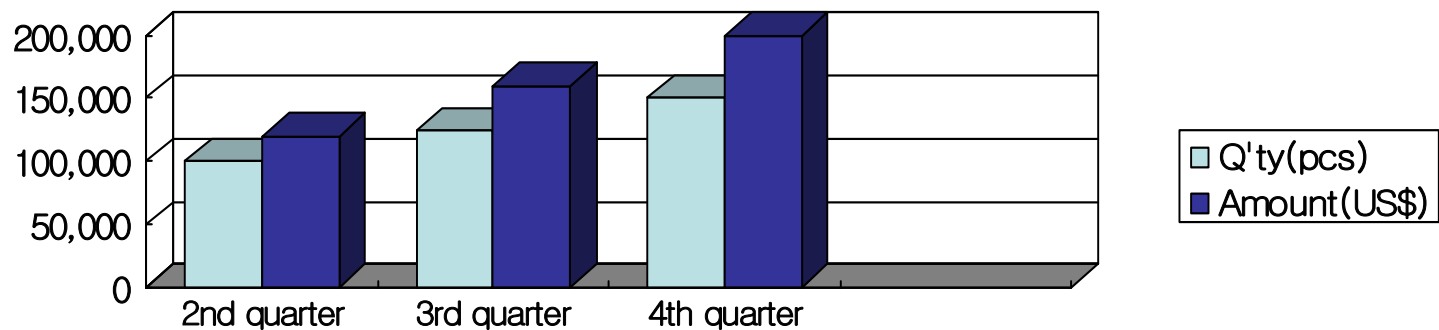


7. Order Running Plan

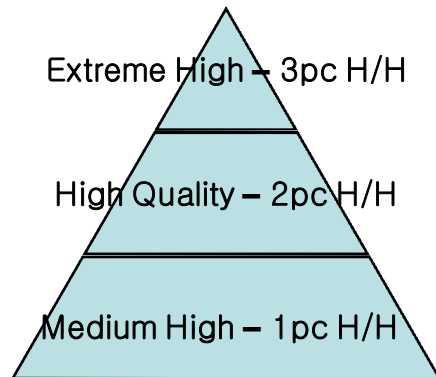
* Production running q'ty

1. From March to June, 2006
→ 100,000pcs per month
2. From July to September, 2006
→ 125,000pcs per month
3. From October to December, 2006
→ 150,000pcs per month

* Order Running Plan (Year 2006)



8. Product Control



1-1) Quality

- Our quality is focused on high end product based on piece by piece polishing.
- Our main product are 1pc & 2pc H/H (Knife, Spoon, Fork).
- We will produce 3pc H/H in short time.

1-2) Logo of the company

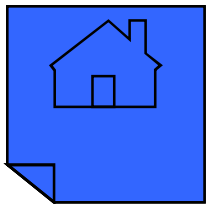
- Logo representing the company is as above.
- Mirae means 'Bright Future' in Korean language.

1-3) Claim settlement

- In case of complain about the quality, we replace the q'ty or discount the price for next order.
- Arranging the ship-back to Indonesia for clamed q'ty for improvement.

9. Future Plan

1. The best & trust worthy Hollow ware producer in the world.
2. Best quality for good valued price.
3. Planning to increase the facility so that we can produce forged product with high-end quality in short time.
4. Keep developing & introducing new designs to customers by using Graphic design program.
5. Regarding our customers as the best all the times.
6. Small sized but good working factory



* Company contact information

Address : Ngoro Industri Persada H 18,
Ngoro, Mojokerto, Indonesia

Tel : (62) 321 615119 / (62) 321 615150 (Dir)

Fax : (62) 321 615110

H.P : (62) 81 330892505 (Mr.J.W.Song)

E mail : mirae@mirae.co.id / cestsong@hotmail.com

Website : www.mirae.co.id

(*Website is now under construction.)