

PT Sung Hyun Indonesia Company Profile



Apr 22, 2021

Contents

- Introduction
- Factory layout
- Production Facility
- Production Capacity
- Development
- Product
- Culture, Focus & Strength

Introduction

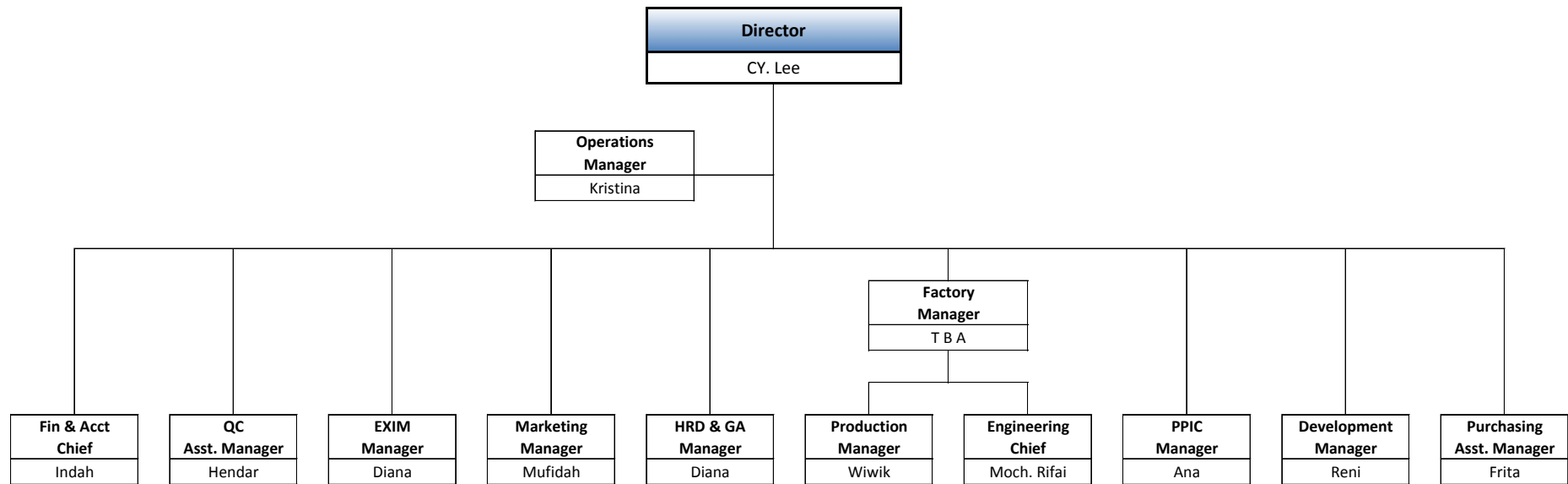
- Company History
- Organization Chart
- Location
- Bonded zone Facility
- Manpower

Company History

- Founded in 2008 (Korean invested Company)
- Started Production for Geox in 2009 till now
- Started Production for Fila in 2010
- Started Production for *FOS in 2011
- Currently full production is dedicated to Geox

*FOS : Footwear sourcing company in Korea. We exported
Lonsdale & Everlast brand to UK and other European country through FOS

Organization Chart



Location



Jakarta – Surabaya : 1 hour by plane
Surabaya Airport to PT SHI : 1 hour by car

PT Sunghyun Indonesia

Bonded Zone Facility (EPTE)



- Obtained EPTE facility in 2012
- Implemented from 2013
- Recent extension until Oct 2021
- Quicker customs clearance for imported Materials

EPTE : **E**ntrepot **P**roduksi untuk **T**ujuan **E**xpor
Bonded zone for Exported Product



Manpower Status (as of March 2021)

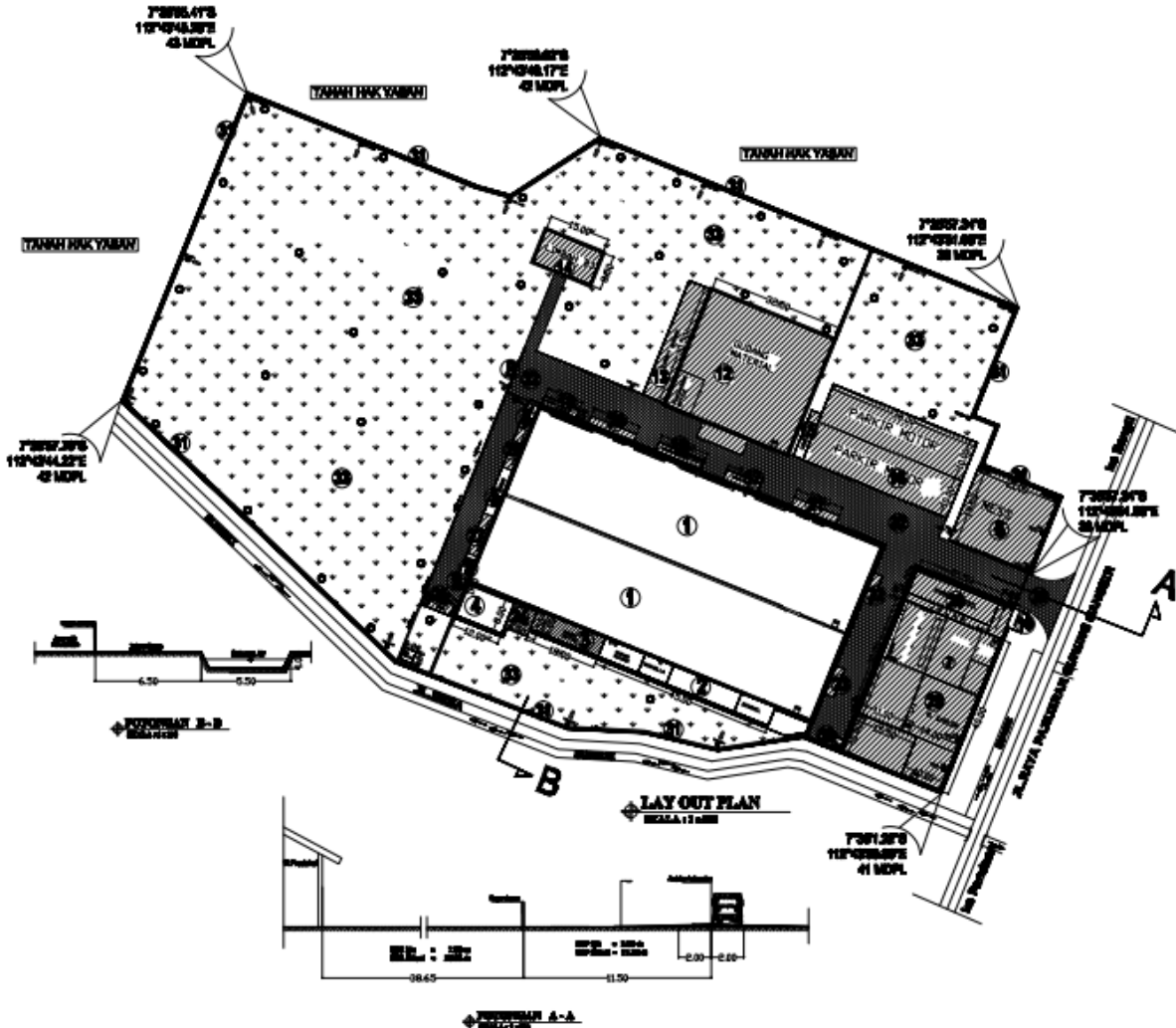
Department		MP
Direct	Sewing	475
	Assembly	190
	Cutting	68
	Stock-fitting	108
	Others	127
	Sub-Total	950
	%	84,1
Indirect	QC	36
	Development	40
	Engineering	15
	Warehouse	21
	GA /HR	17
	EXIM	7
	Lab	3
	Others	41
	Sub-Total	180
	%	15,9
	G. Total	1,130



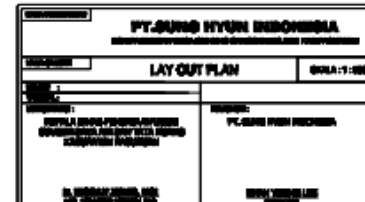
Factory Layout



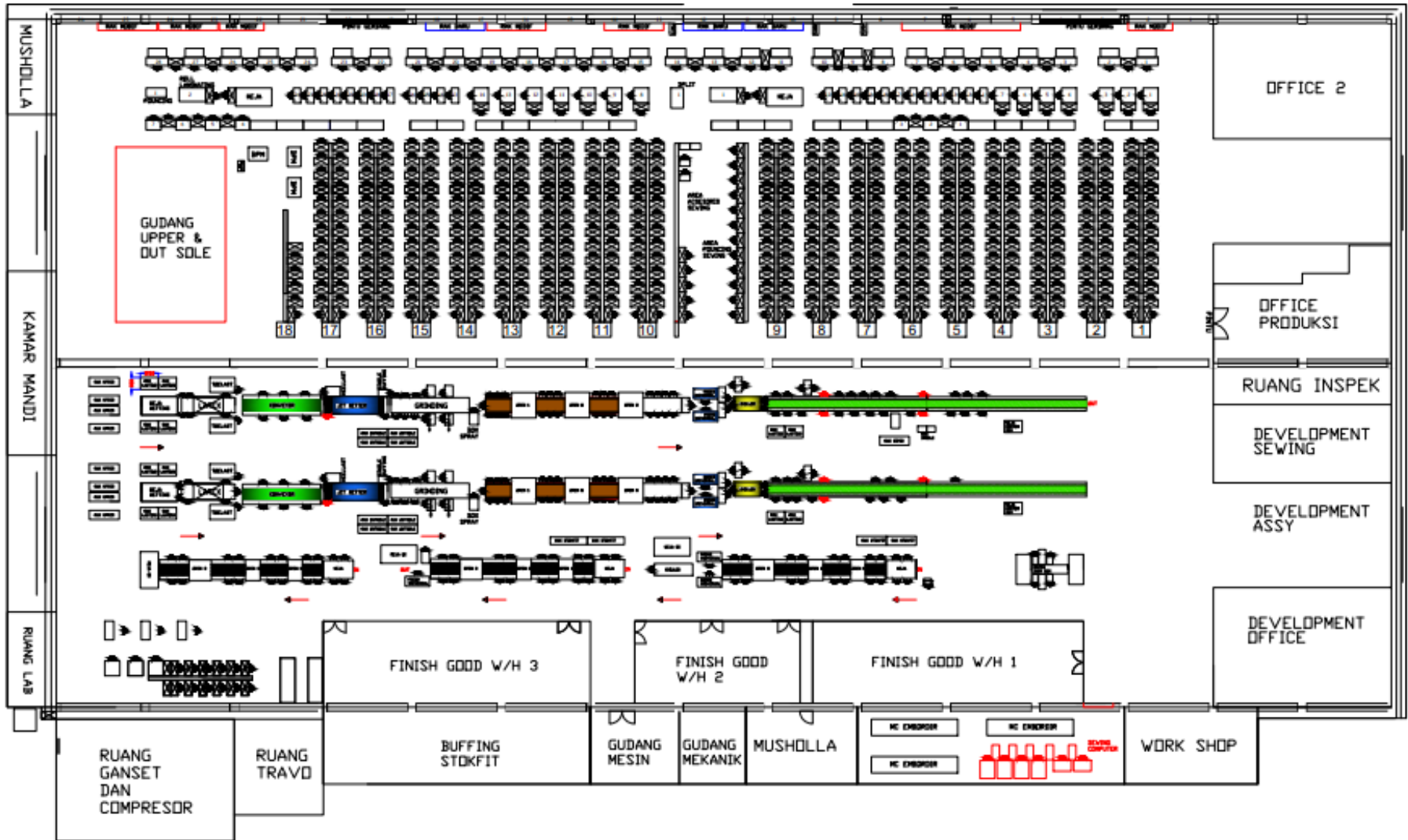
2.7 Hectare (27,300 square meters)



NO	PERUBAHAN	DIN LAMA		DIN BARU	
		LUAS (M ²)	PERSENT (%)	LUAS (M ²)	PERSENT (%)
1	BANGUNAN TERSEKUT				
2	BANGUNAN LAMA				
3	IMB. BLOK BANGUNAN BARU/REVI				
4	RUANG PROSES	4.140,00	15,13	4.140,00	15,13
5	RUANG KEMUNGKILAN	238,00	0,87	238,00	0,87
6	R. BENTANG TUKUL/ JERAMAH BANGUNAN BUNYING	41,00	0,15	41,00	0,15
7	RUANG	36,15	0,13	36,15	0,13
8	LOKASI	200,00	0,73	200,00	0,73
9	PANGGUNG	230,00	0,84	400,00	1,48
10	TANGKAI PANGGUNG	130,00	0,48	130,00	0,48
11	TANGKAI BENTANG	11,00	0,04	11,00	0,04
12	RUANG BANGUNAN	4,00	0,01	4,00	0,01
13	PADA BANGUNAN	31,90	0,11	31,90	0,11
14	RUANG	110,00	0,40	110,00	0,40
15	RUANG	11,00	0,04	11,00	0,04
16	RUANG	11,00	0,04	11,00	0,04
17	TOTAL BANGUNAN LAMA	5.194,00	19,08	5.234,90	19,14
18	BANGUNAN BARU				
19	RUANG KEMUNGKILAN	-	-	300,00	1,10
20	RUANG BANGUNAN	-	-	233,00	0,85
21	PADA BANGUNAN BARU	-	-	427,00	1,56
22	RUANG	-	-	20,00	0,07
23	RUANG PROSES	-	-	700,00	2,56
24	RUANG PANGGUNG	-	-	270,00	0,99
25	RUANG	-	-	30,00	0,11
26	RUANG	-	-	17,00	0,06
27	RUANG	-	-	50,00	0,18
28	RUANG	-	-	30,00	0,11
29	RUANG	-	-	15,00	0,05
30	RUANG	-	-	15,00	0,05
31	RUANG	-	-	22,00	0,08
32	RUANG	-	-	20,00	0,07
33	RUANG	-	-	15,00	0,05
34	RUANG	-	-	22,00	0,08
35	RUANG	-	-	22,00	0,08
36	RUANG	-	-	1.000,00	3,65
37	RUANG	-	-	8,00	0,03
38	RUANG	-	-	200,00	0,73
39	TOTAL BANGUNAN BARU	-	-	3.867,10	14,19
40	TOTAL BANGUNAN TERSEKUT LAMA & BARU	5.194,00	19,08	9.102,00	33,33
41	BANGUNAN TERSEKUT				
42	RUANG	300,00	1,10	375,00	1,37
43	RUANG	2.070,00	7,57	2.455,00	9,00
44	RUANG	1.827,00	6,69	1.940,00	7,09
45	TOTAL BANGUNAN TERSEKUT	4.197,00	15,36	5.770,00	21,16
46	LUAS TOTAL	27.324,00	100,00	27.324,00	100,00



Production Layout



Production Facility



- 2 Assembly lines
- 16 Sewing lines
- 3 Stock-fitting lines
- 2 Cutting lines

- HF Emboss Printing
- Embroidery
- Laminating
- Computer sewing

Production Facility



Production Facility



Production Capacity

Department	Capacity / Month
Assembly	100,000 prs
Sewing	100,000 prs
Cutting	100,000 prs

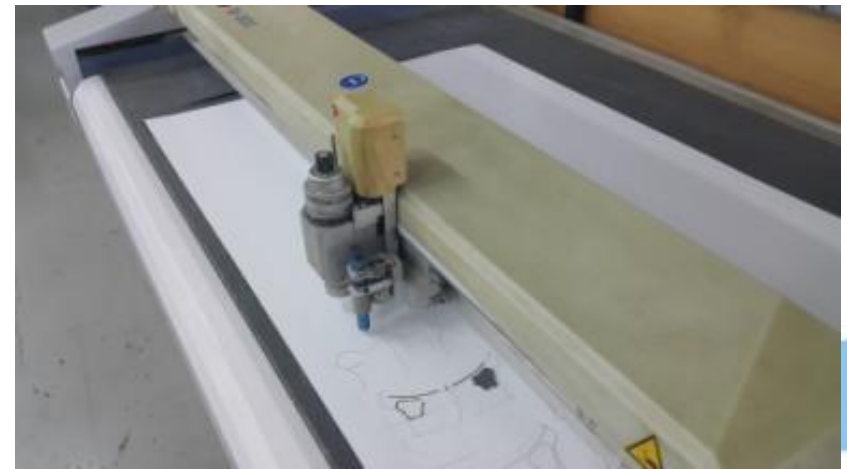
Development (Facility & Manpower)

Facility

- Mini sample room (Cutting, Sewing and Assembly)
- Crispin Machine

Manpower

- Work shop : 26 Operators / Supervisor
- Office : 14 persons



Customer



- Mainly Baby & Junior specialized
- Leather / Synthetic/ Textile upper
- Rubber sole and TR sole

PT SHI Focus



- Quality First
- Continued Improvement & Change
- Goal & Performance oriented operation
- HSE (Health, Safety & Environmental)
- Training & Education for employees
- Continued Work for Productivity Increase
- **Make FUN place to work for all employees**

Strength of PT SHI



- **Good Quality**
- **On Time Delivery**
- Excellent Communication
- Price Competitiveness
- Great Teamwork



PT SHI 10th Anniversary – Aug 25, 2018

SUNGHYUN



Thank You !